

# OUR UNIQUE PROJECT FEATURES



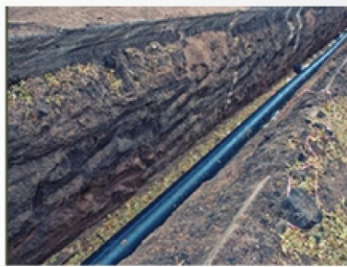
Guarded Community



Fencing All Around the Community



Black Top (BT) Roads



Underground Water Supply



Jogging & Walking Track



Avenue Plantation



Electrical Lines



Rainwater Harvesting Pits



Underground Drainage System



24x7 Security



Open Lawns & Landscaped Gardens



Children's Play Area



## OUR VISION

Our company vision is to become a leader within the real estate industry across Telangana and Andhra Pradesh by 2030. Our focus and effort are continually driven toward constantly improving our reputation as developers known for quality land development projects.

TRUE CITI aims for 'future growth' by strengthening relationships with existing customers, landlords, architects, engineers, government, and private organizations as well investors whilst proactively seeking new opportunities nationally.

## MISSION STATEMENT

As a plotted land developer TRUE CITI adopts a disciplined and consistent approach each and every time, we take on projects, regardless of size or scale. Our planned approach ensures all projects tendered for are competitively priced with adequate resources assigned to ensure high quality delivery in a timely manner. Our strict internal processes and strength in project management have served our clients well in the past and will continue to do so in the future. We value our client's feedback. We are here for the long haul, and you can be rest assured TRUE CITI has superior skills, experience, strength in resources, and the financial capacity to price, develop and deliver projects ranging from simple land plot development through to complex large scale community projects in a timely fashion.



## VALUES & CULTURE

- INTEGRITY** : Understanding, firm but fair, honest and transparent.
- TEAMWORK** : Encouraging collaboration and mutual support to reinforce our one-team approach.
- RESPECT** : With due regard to the feelings, wishes, contributions and opinions of others.
- COMMITMENT** : Dedication to achieving excellence in all aspects of our business.
- INNOVATION** : Encouraging new ideas that contribute to the success of the company.



True Citi Projects is backed by a team of Experienced Industry Professionals with a combined domain expertise of over 30 years in the Hyderabad Real Estate Market offering Golden Investment opportunities across Plotted Development, Apartments, Villas & Gated Communities. Since its inception, True Citi Projects LLP has earned its reputation as a leading Real Estate Developer. We pride ourselves on developing future ready, plots and farm lands, always with a sustainable footprint. Working with a strong team of industry professionals, we have a proven track record in unlocking value in sites and translating customer dreams into reality.

**TRUE CITI PROJECTS LLP.**  
Plot No 199, Kavuri Hills, Madhapur,  
Hyderabad 500 081, T.S. India.

[www.truecitiprojects.com](http://www.truecitiprojects.com)

AWARDS -



Property Management Company  
of the Year ( South ) 2023



Emerging Developer of the Year  
Residential ( South ) 2023

For More Details

\* CPXEL STUDIOS

**DON'T WAIT** !

**TIME TO INVEST ON TRUE CITI PROJECTS**



Disclaimer: Images used are for representation purposes only and may vary from actual.



OUR PROJECTS •

The map shows the following projects and locations:

- Pharma City** (with a family image and a red **CLOSED** banner)
- Amazon** (with a house image and a red **CLOSED** banner)
- Green City** (Suraram, Sadasivpet) Premium Open Villa Plots Community (with a house image and a red **CLOSED** banner)
- Brindavanam** (60 Acre Lush Green Open Villa Plots Community @ Kadthal) (with a family image)
- Ramky Discovery City**
- Step Back Into Nature...** (Kondurg) (with a family image)
- Greendeur @ Rajapur** (Fruit Farm Venture) (with a family image and a red **CLOSED** banner)

Other locations and infrastructure marked on the map include:

- Rajapur & Balnagar SEZ
- Rajapur Railway Station
- Bangalore Express Highway (via 100ft Road)
- Tata Social Science University & Symbiosis University
- 6 lane Srisaillam Highway
- Outer Ring Road
- Financial District Gachibowli
- MRF
- R.G International Airport

Logos and awards shown include:

- APPROVED DTCP LAYOUT
- THE ORCHARD P.
- 10 YEARS

\* Disclaimer: Images used are for representation purposes only and may vary from actual.